

GREAT LAKES ICE BREAKING





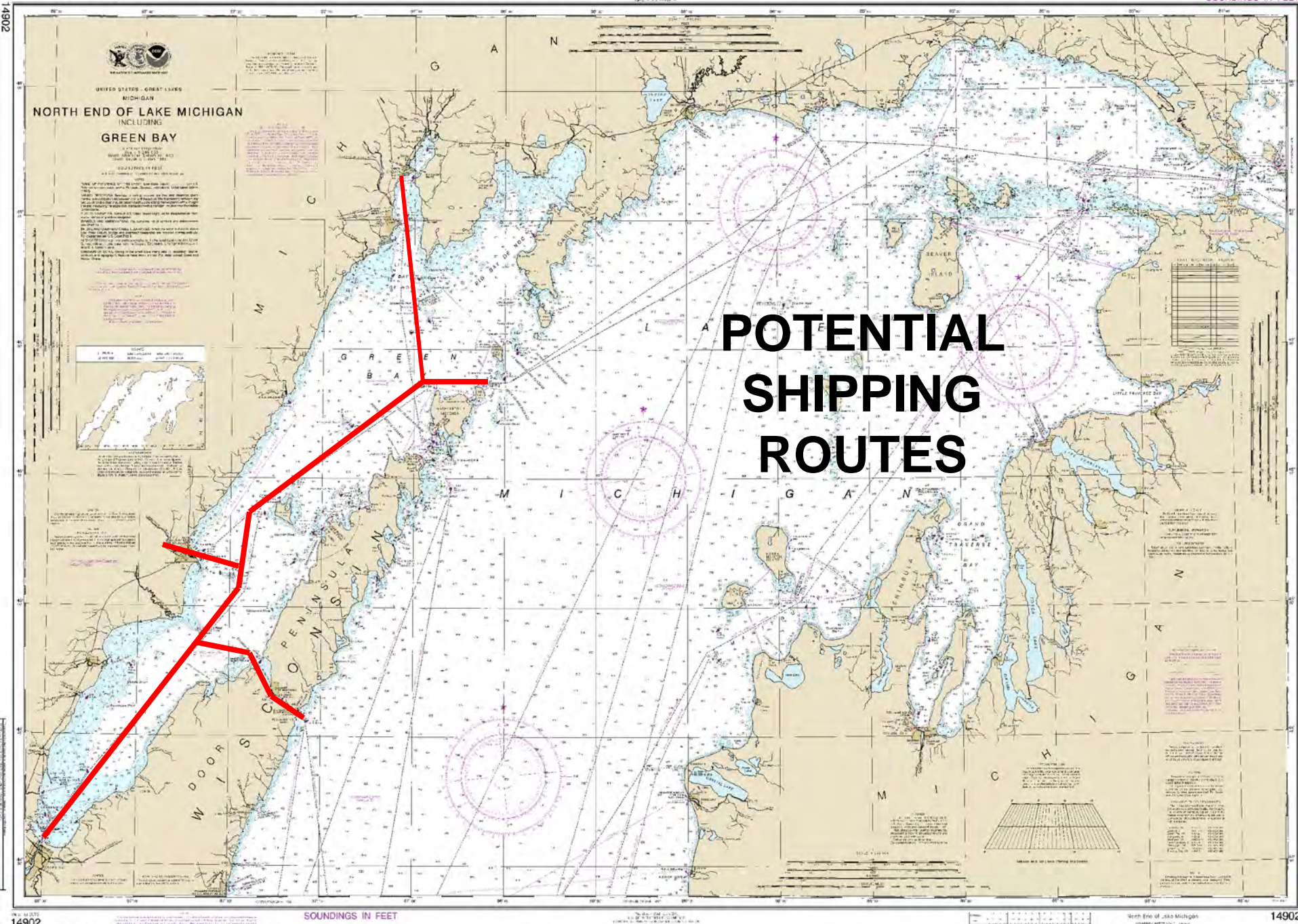
SOUNDINGS IN FEET

North End of Lake Michigan
(CHS 1875-1880)

A detailed nautical chart of Green Bay, Wisconsin, and its surrounding waters. The chart includes depth soundings, navigational aids, and geographical features. Overlaid on the chart is the title "US COAST GUARD DOMICE POLICY AND PROCEDURES" in large, bold, black capital letters. To the left of the title is a bulleted list of six items. The background of the slide is this nautical chart, which shows the coastline of Wisconsin, including Door Peninsula and Green Bay. There are also smaller inset maps: one in the top left showing "OCONTO HARBOR WISCONSIN" and another in the top right showing a larger view of the bay area. The chart is marked with latitude and longitude coordinates.

US COAST GUARD DOMICE POLICY AND PROCEDURES

- Authority
- Priority
- Organization
- Resources
- Commercial Assistance
- Outreach



SOUNDINGS IN FEET

North End of Lake Michigan
(CHART 14902)



Homeland
Security