

THE BAY OF GREEN BAY NATIONAL ESTUARINE RESEARCH RESERVE (NERR) DESIGNATION

2022 Port Symposium
April 14, 2022

Emily Tyner
Director of Freshwater Strategy
State Lead NERR Designation





RESTORATION SUCCESS STORIES



Tom Prestby



Ducks Unlimited

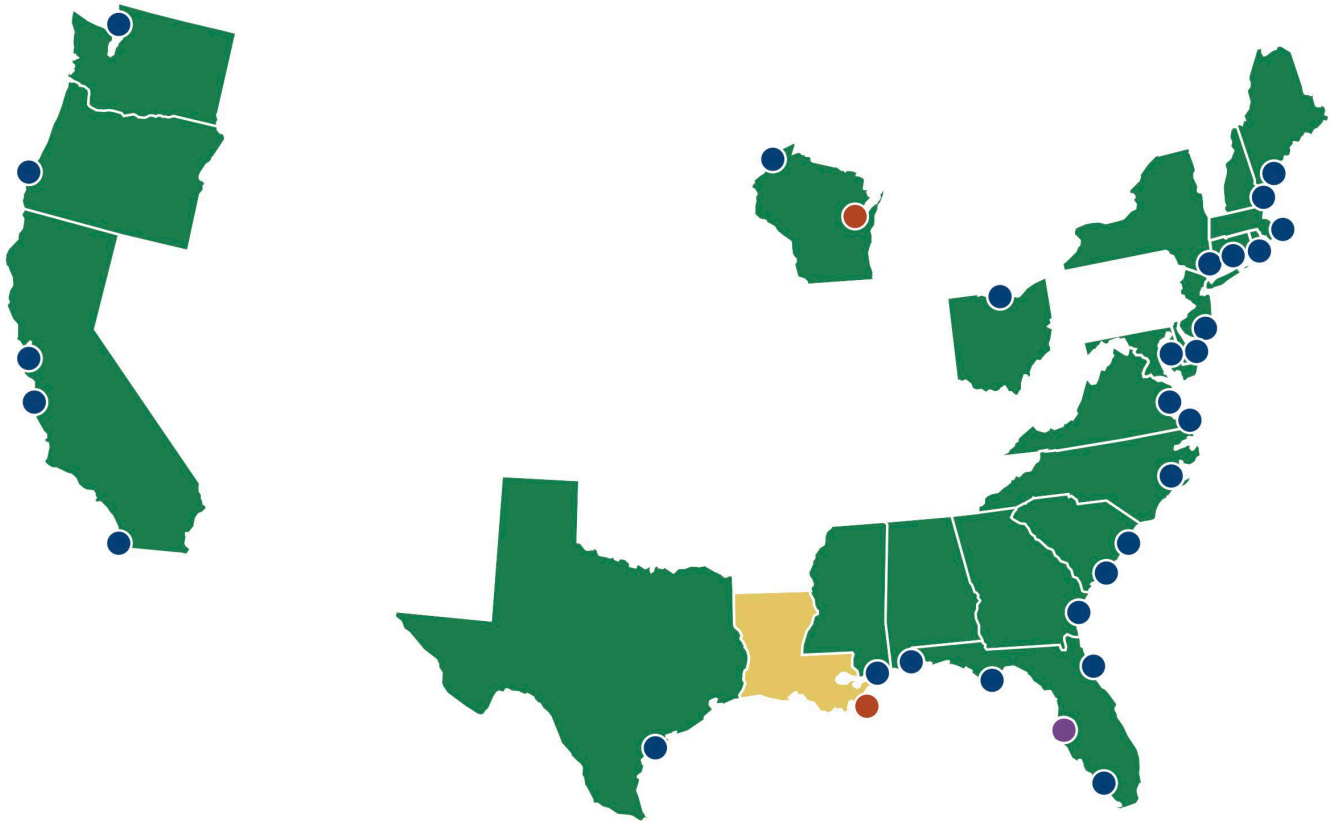


Ben Young, NEW Water



Bobbie Webster

National Estuarine Research Reserve Sites



Alaska



Hawaii



Puerto Rico



U.S. Virgin Islands



designated reserve



proposed reserve



designation in process



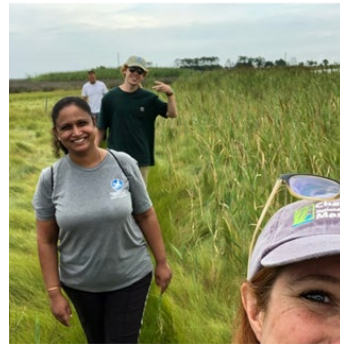
UNIVERSITY of WISCONSIN
GREEN BAY

GOALS FOR A BAY OF GREEN BAY NERR

1. Address coastal management challenges through coordinated local and system-wide research
2. Enhance public awareness and understanding of estuaries and coasts
3. Partner with federal agencies, state, public, and private entities
4. Holistic view of water and connections to communities and ecosystems
5. Technology focused



Research



Education



Stewardship



Training

RESEARCH, EDUCATION, STEWARDSHIP, & TRAINING

- Visitor center, galleries, etc.
- Conference space and classrooms
- Research station
- Analytical laboratory
- Docking facilities + public boat access
- Overnight accommodations



Lake Superior Estuarium, WI



Great Bay Discovery Center, NH

A NON-REGULATORY STATE-FEDERAL PARTNERSHIP

State role:

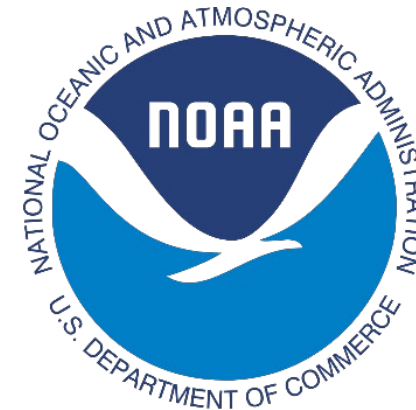
- Land co-management
- Reserve staff members
- Program implementation
- Funding (30% of operational costs)

Federal role:

- National program guidance
- Technical assistance
- Program coordination
- Funding (70% of operational costs)



UNIVERSITY of WISCONSIN
GREEN BAY



Bay of Green Bay NERR Designation Timeline

2022	2023	2024	End of 2024	
Select NERR Sites - Natural Areas	Select NERR Site - Education and Visitor Center		Finding and Record of Decision	Designation
	NERR Management Plan			
	Environmental Impact Statement (with NOAA)	Develop NOAA-State MOUs		



SITE SELECTION COMMITTEE STRUCTURE

NOAA-State
Coordination
Team

NOAA

UWGB

Governor's
Office

Site Coordination Committee

Site Nomination
Document

Site Development Committee

- Relevant Coastal Geography
- Develop criteria
- Prescreening

Site Evaluation Committee

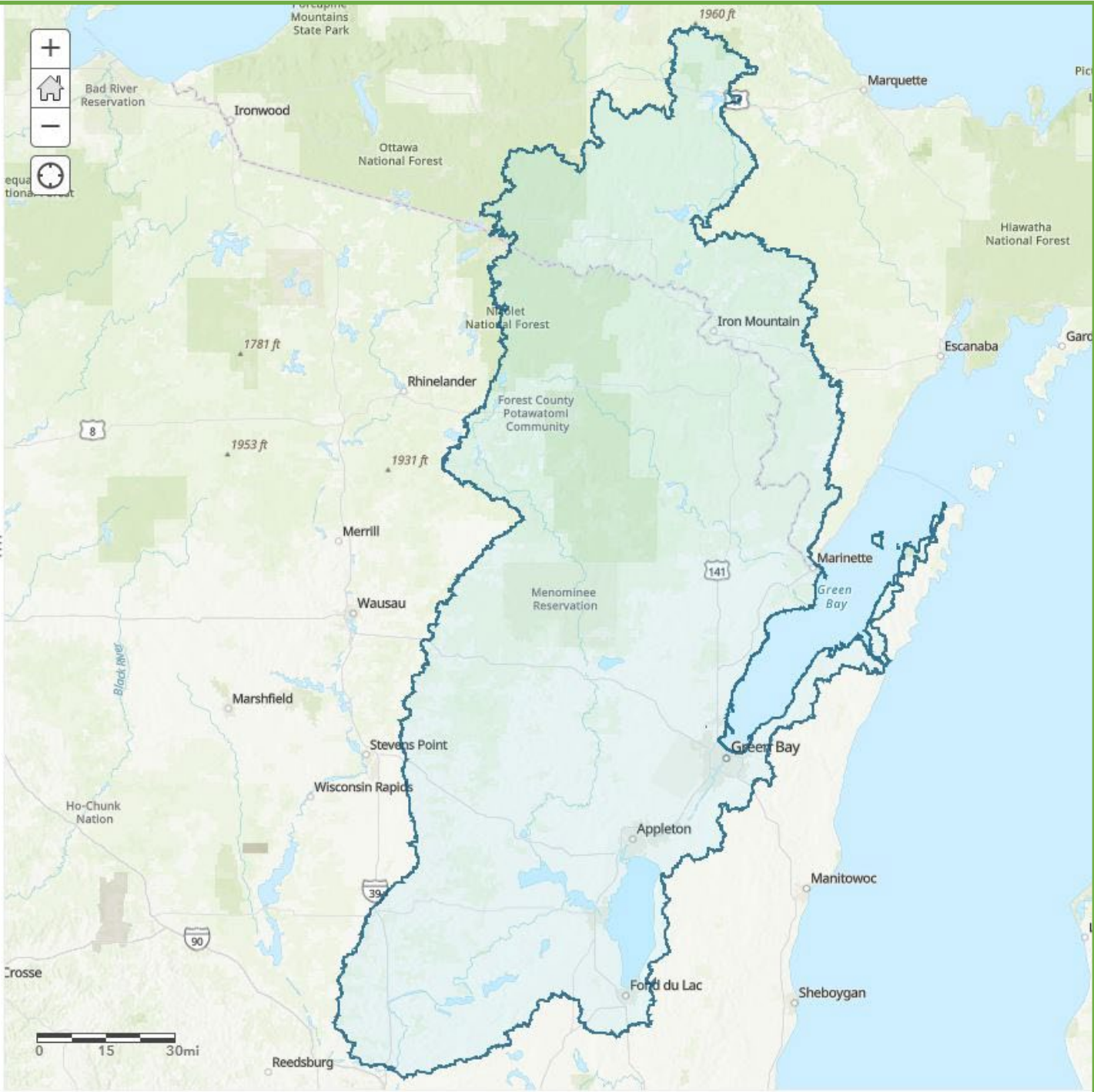
- Apply criteria
- Recommend a site(s)
- Propose boundaries

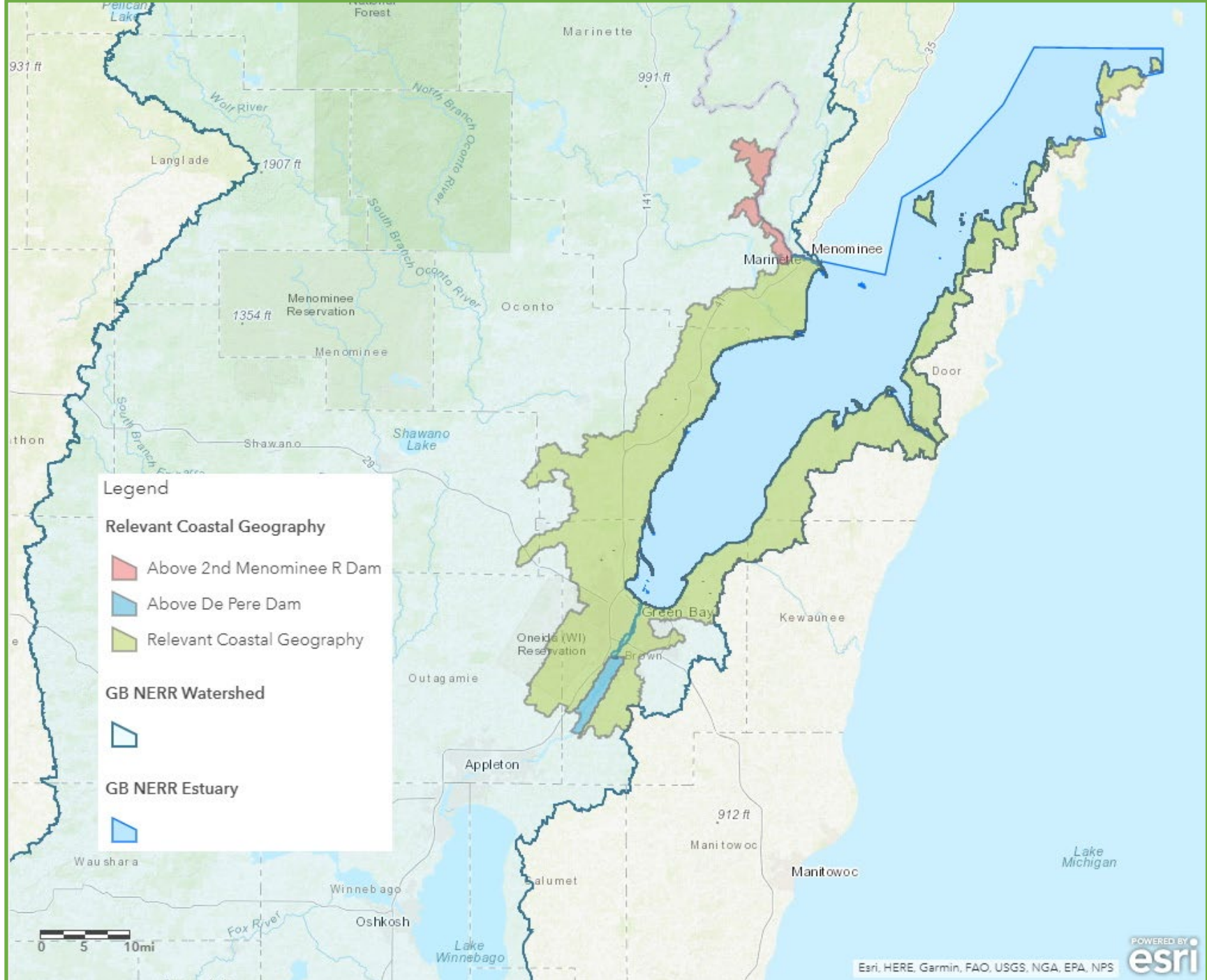




Legend

Bay of Green Bay Watershed





Legend

Relevant Coastal Geography

- Above 2nd Menominee R Dam
- Above De Pere Dam
- Relevant Coastal Geography

GB NERR Watershed

- GB NERR Watershed

GB NERR Estuary

- GB NERR Estuary

Bay of Green Bay NERR Designation Timeline

2022	2023	2024	End of 2024
Select NERR Sites - Natural Areas	Select NERR Site - Education and Visitor Center		Finding and Record of Decision
	★ NERR Management Plan		
	Environmental Impact Statement (with NOAA)	Develop NOAA-State MOUs	
			Designation

May 10th & 11th – virtual roadshow to share criteria and maps of prescreened natural areas



INITIAL SUCCESSES



Community impact

- Resolutions of support from
 - Great Lakes Inter-Tribal Council
 - Marinette County Board of Supervisors
 - Peshtigo Common Council
 - City of Marinette
 - Menominee County Board of Supervisors (Michigan)

Funding

- Fund for Lake Michigan
- NOAA
- Wisconsin Coastal Management Program
- Wisconsin Sea Grant

Projects

- Surround-sound documentation of the Green Bay Estuary
- Developing a Green Bay Estuary Archives Collection

LEARN MORE



Green Bay National Estuarine Research Reserve



NERR in the News

Program Updates & Info

Site Selection & Timeline >

→ Get Involved

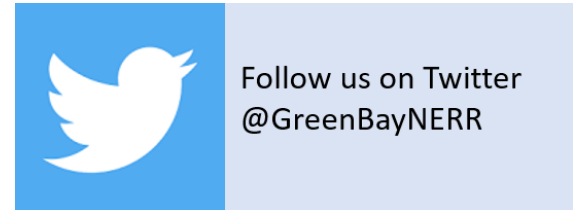
FAQs

Fact Sheets & Videos

What is a National Estuarine Research Reserve?

The National Estuarine Research Reserve System (NERR) is a national network of 30 sites across the coastal US, including the Great Lakes, designed to protect and study estuaries and their coastal wetlands. The mission of the NERR System is, "To practice and promote stewardship of coasts and estuaries through innovative research, education, and training using a place-based system of protected areas." Established through the Coastal Zone Management Act, the reserves represent a partnership program between NOAA and the coastal states. NOAA provides funding and national guidance, and each site is managed on a daily basis by a lead state agency or university with input from local partners. For the Green Bay NERR, the University of Wisconsin-Green Bay is leading the designation process. At the local level, a Green Bay NERR will offer a coordinating force to manage, restore, and protect the Green Bay ecosystem, with a programmatic focus on four sectors: research, education, stewardship, and training.

uwgb.edu/nerr



Emily Tyner tyner@uwgb.edu





Katrina Harms

SITE SELECTION CRITERIA FROM NOAA GUIDELINES



I. Environmental Representativeness



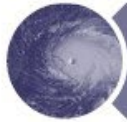
II. Value of the Site for Research, Monitoring, and Resource Protection



III. Suitability of the Site for Education and Interpretation



IV. Acquisition and Management Considerations



V. Natural Resource and Build Infrastructure Resilience to Climate Change Impacts



VI. Partnership Building



VII. Institutional Commitment

GENERAL SITE STATISTICS

- Designated sites receive ~\$758,000/year for basic operations
- Local funds - an additional minimum ongoing match of 30% (~\$324,800/year)
- Existing facilities range in size: 7,900-28,950 sq ft., avg. 15,176 sq ft.
- Existing reserves range in size from 500 acres (Ohio) – 372,000 acres (Alaska)

PRESCREENING OF NATURAL AREA SITES

1. Is the parcel coastal/estuarine?
2. Have features aligned with the research and education goals of the NERR (i.e. – not a playground)?
3. Publicly owned?
4. Connected to the estuary in a significant way?

NATIONAL ESTUARINE RESEARCH RESERVE SYSTEM SITES

- ACE Basin (SC)
- Apalachicola (FL)
- Chesapeake Bay (MD)
- Chesapeake Bay (VA)
- **Connecticut, in process**
- Delaware
- Elkhorn Slough (CA)
- Grand Bay (MS)
- Great Bay (NH)
- **Green Bay, (WI) in process**
- Guana Tolomato Matanzas (FL)
- He'eia (HI)
- Hudson River (NY)
- Jacques Cousteau (NJ)
- Jobos Bay (PR)
- Kachemak Bay (AK)
- **Louisiana, in process**
- Mission-Aransas (TX)
- Narragansett Bay (RI)
- North Carolina
- North Inlet-Winyah Bay (SC)
- Lake Superior (WI)
- Old Woman Creek (OH)
- Padilla Bay (WA)
- Rookery Bay (FL)
- San Francisco Bay (CA)
- Sapelo Island (GA)
- South Slough (OR)
- Tijuana River (CA)
- Waquoit Bay (MA)
- Weeks Bay (AL)
- Wells (ME)

